

Actual Size Template (Side 1)

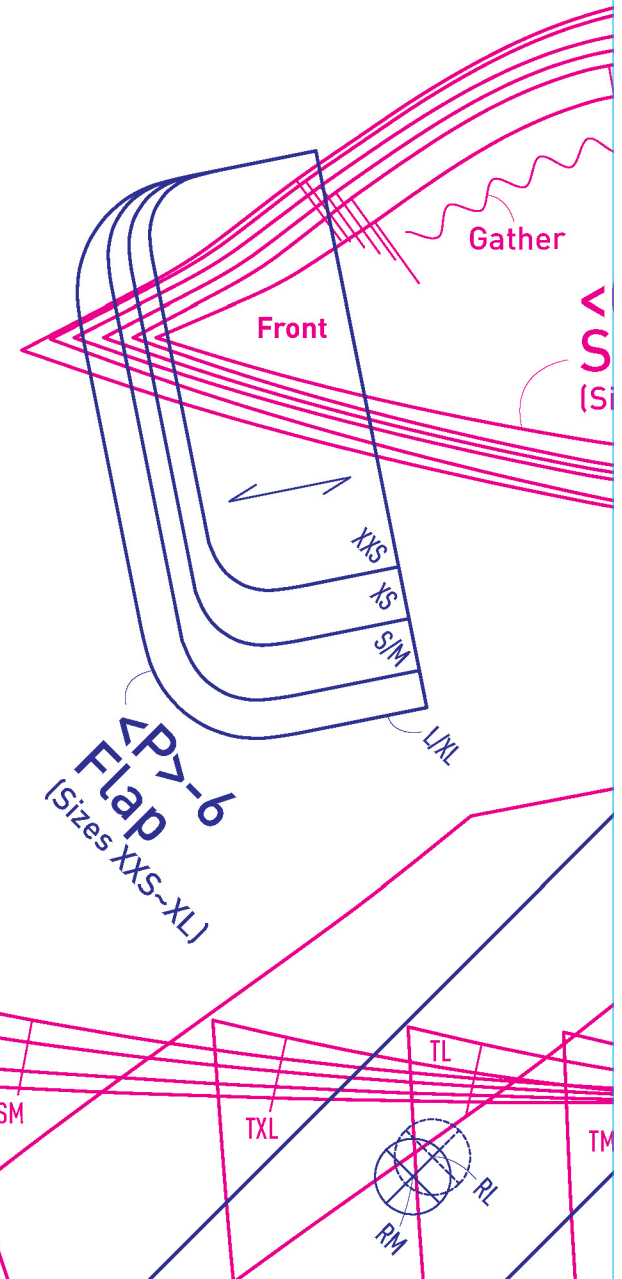
The Well-Dressed Dog

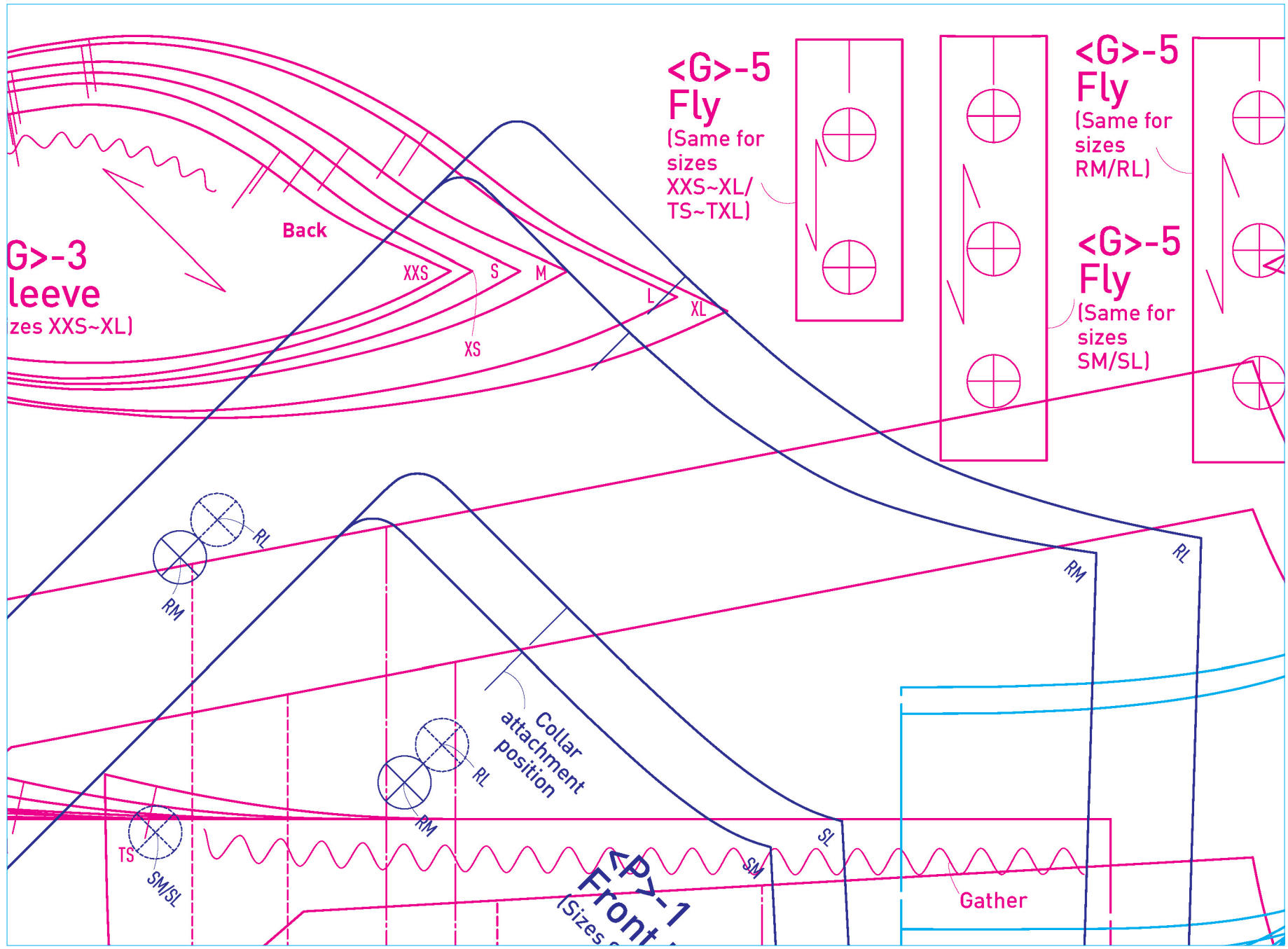


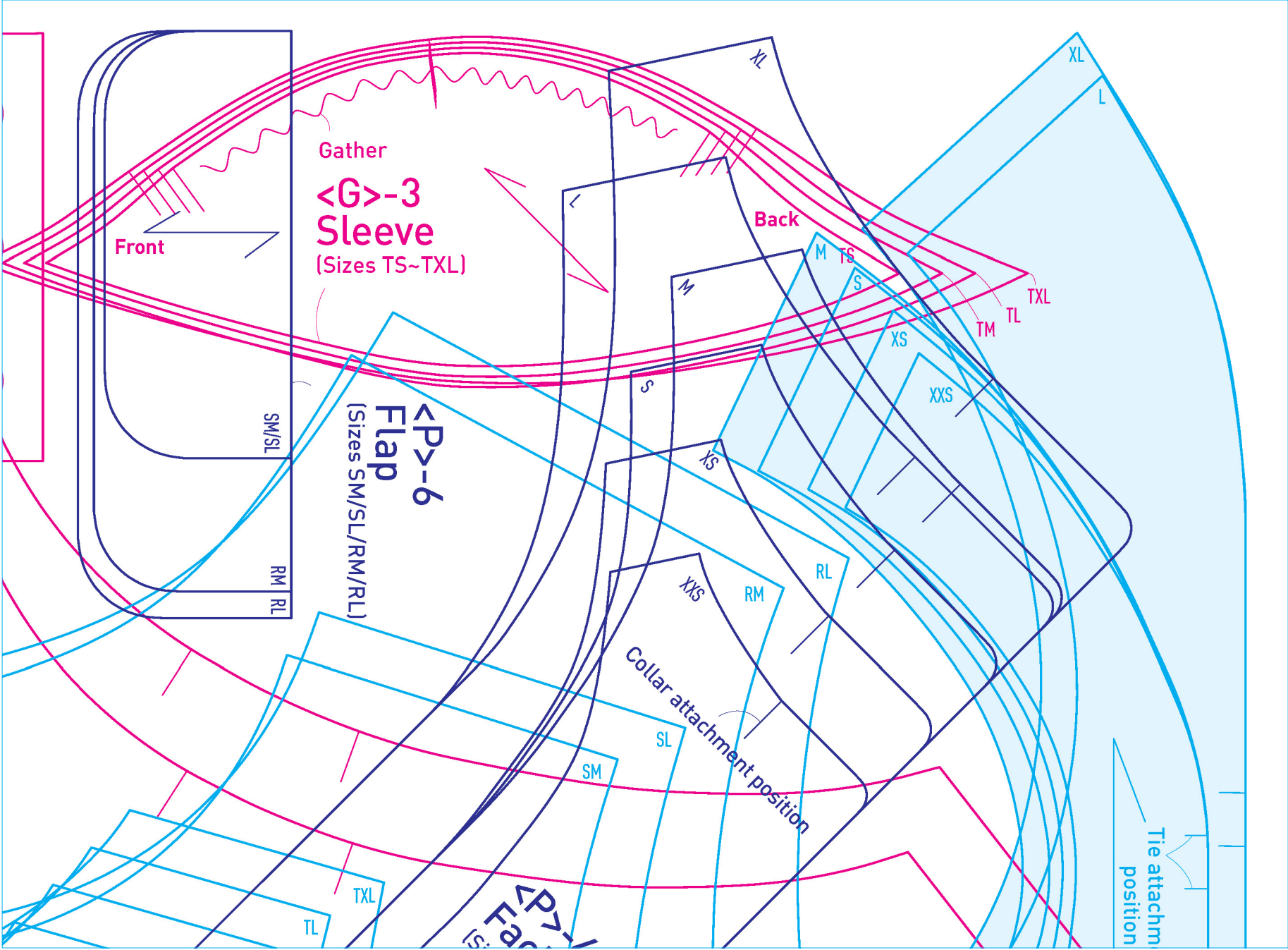
- <A> Tank Top—1 Front bodice piece, 2 Back bodice piece
- Gathered Dress—1 Front bodice, 1 Back bodice, 1 Skirt
- <C> Tulle Dress—1 Front bodice, 2 Back bodice
- <G> Cap Sleeve Top—1 Front bodice, 2 Back bodice, 3 Sleeve, 4 Pocket, 5 Front button placket
- <P> Pea Coat—1 Front bodice, 4 Facing, 5 Collar, 6 Flap, 7 Sleeve tab
 - ※ Back bodice and sleeve pieces are on side 3
- <Q> Cape—1 Bodice, 2 Top collar, 3 Under collar, 4 Tab
- <R> Chanchanko Vest—1 Front bodice, 2 Back bodice

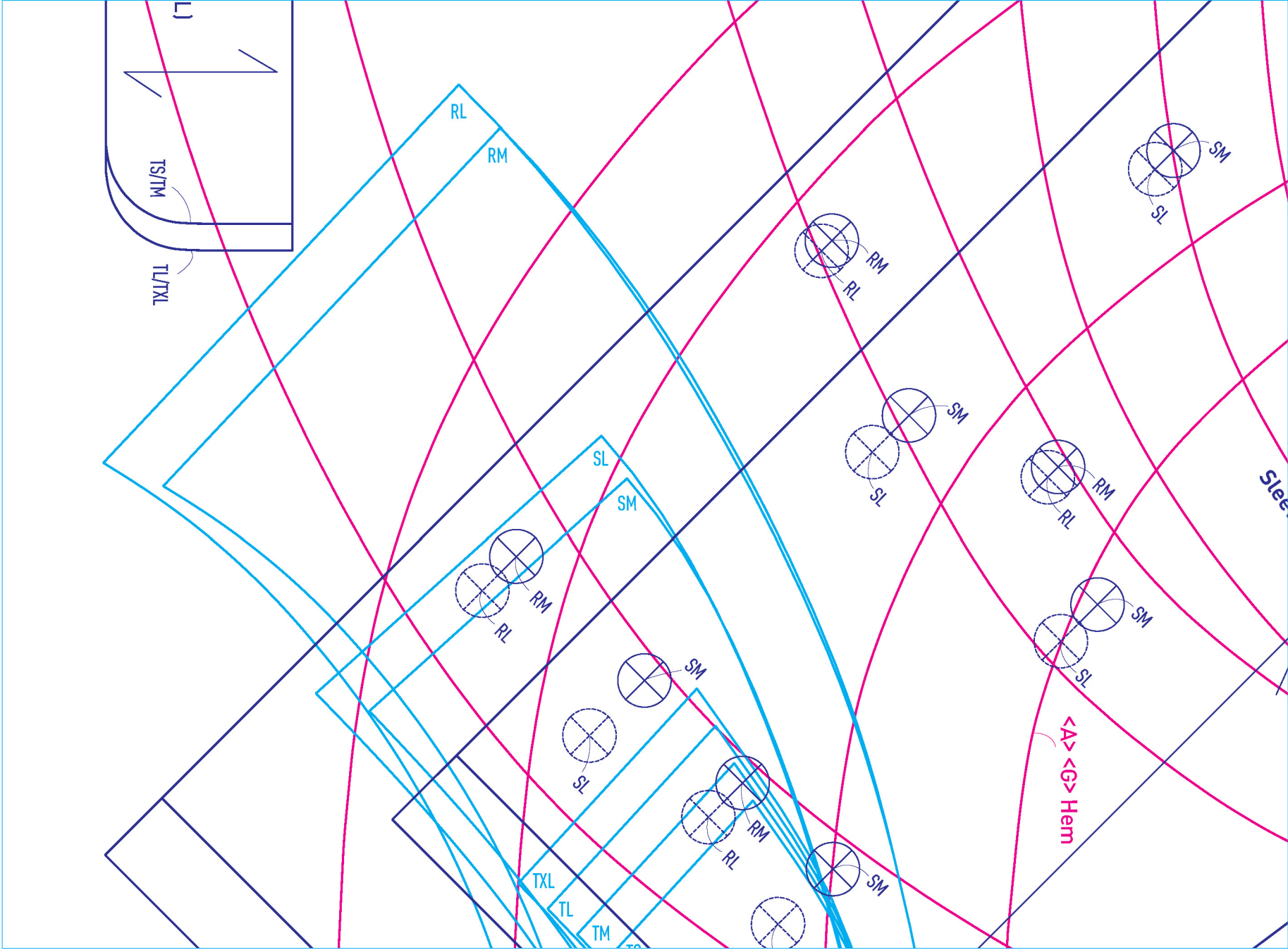
- The templates do not include seam allowances. Please refer to P.54 and the cutting diagrams that are part of the instructions for seam allowance information.
- The templates include 14 sizes from XXS-RL (for projects like hats, the included size range will be between 3 and 5). For sizing information, please refer to P.36.

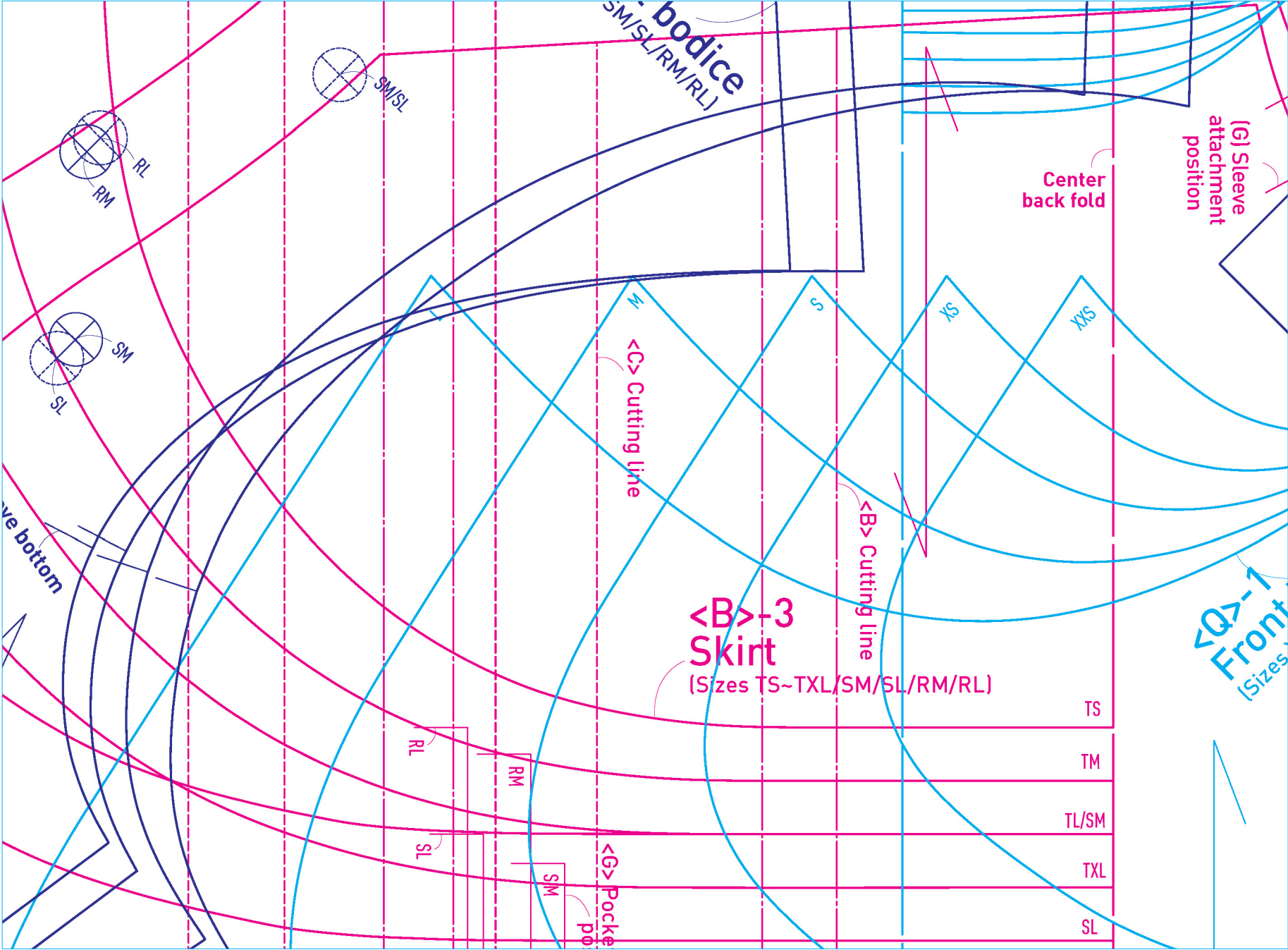
© Toshio Kaneko/NIHON VOGUE-SHA 2018 | Original Japanese edition published in 2018 by Nihon-Vogue Corp., Japan.
English Translation © 2021 Peripus Editions (HK) Ltd. | Printed in Malaysia 2101VP

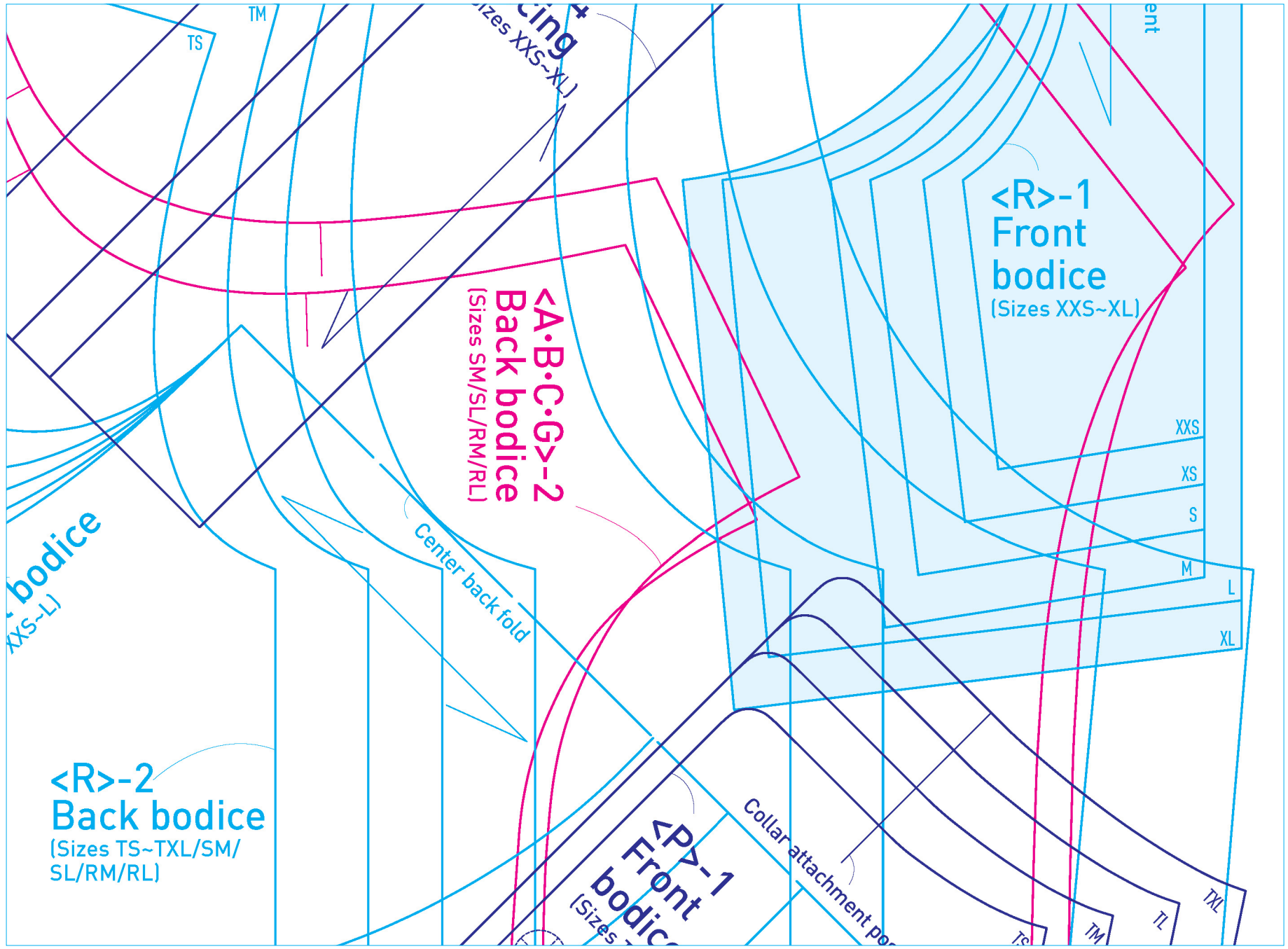




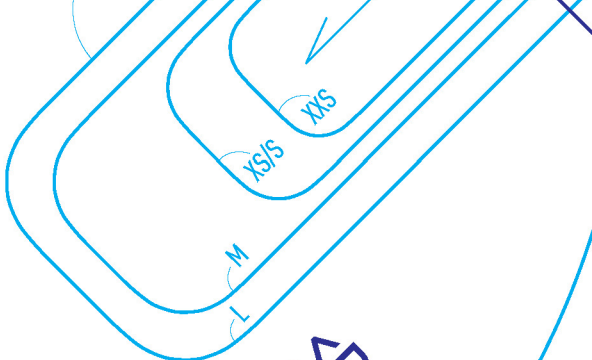




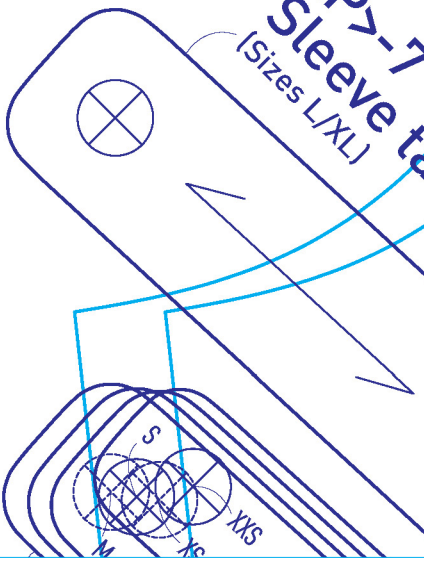




**<Q>-4
Tab**
(Sizes XXS-L)



**<P>-7
Sleeve tab**
(Sizes L/XL)



Tie attachment
position

RL

RM

SL

SM

RM

RL

SM

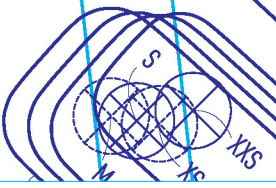
SL

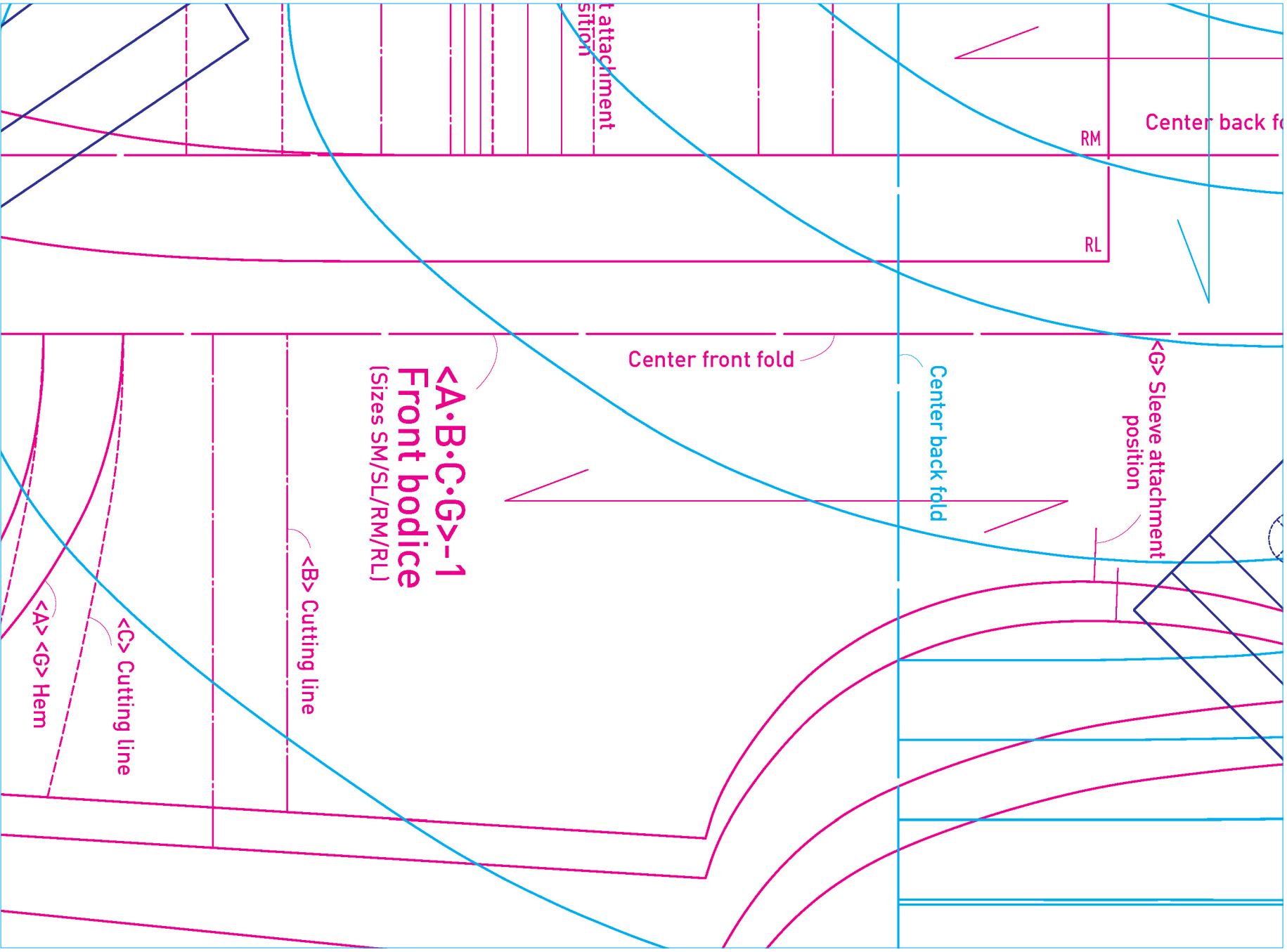
SM

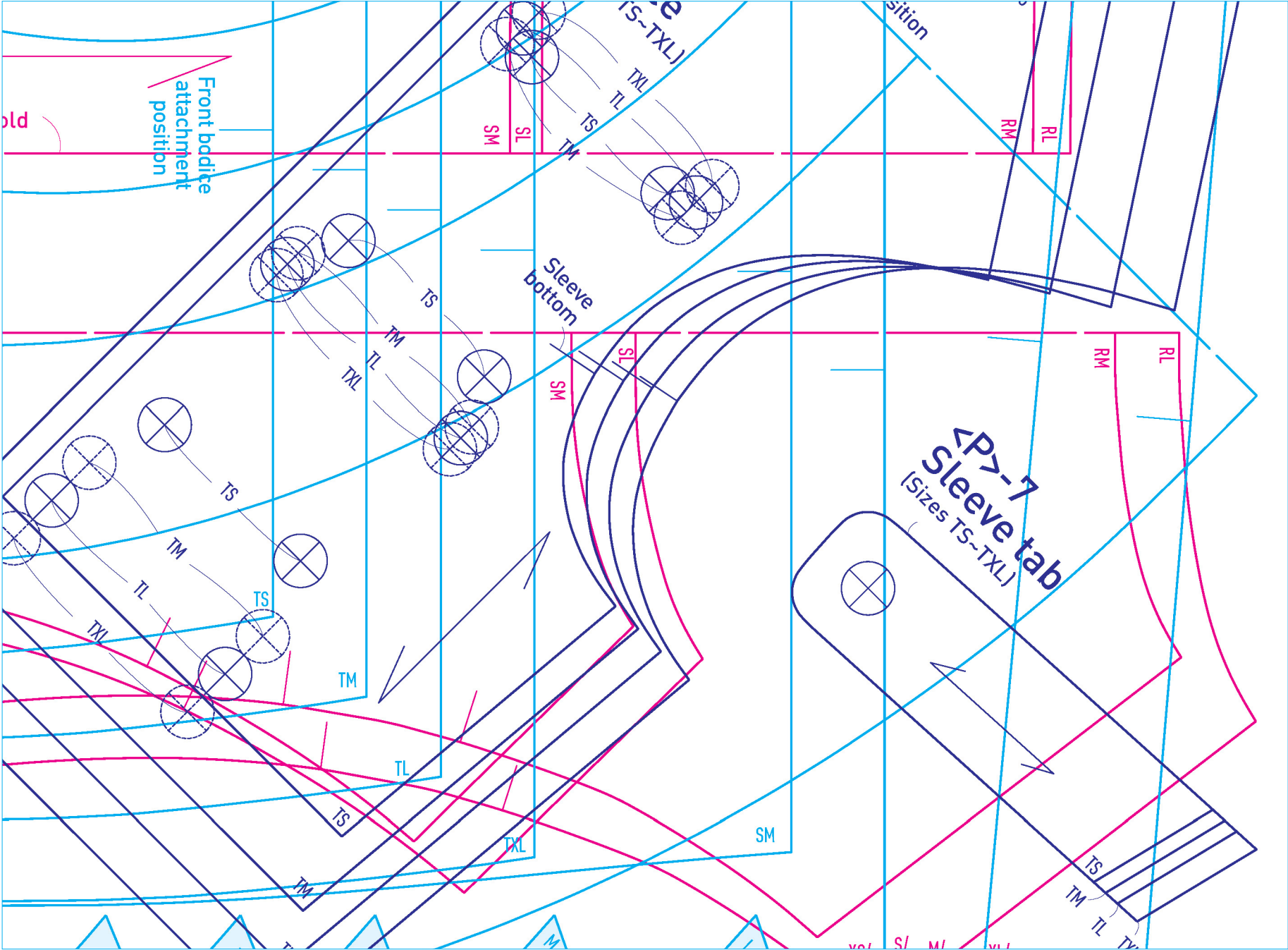
SL

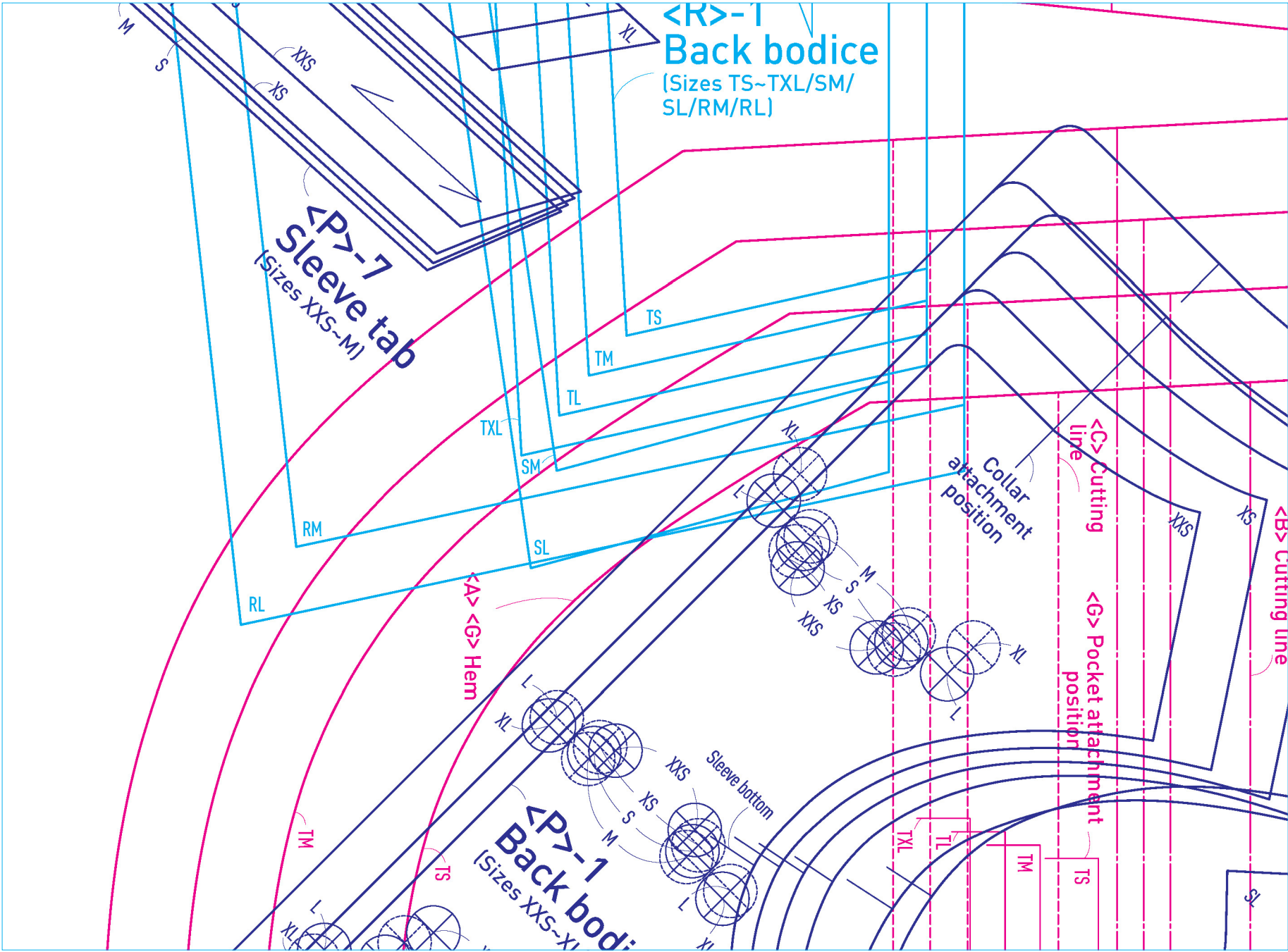
RM

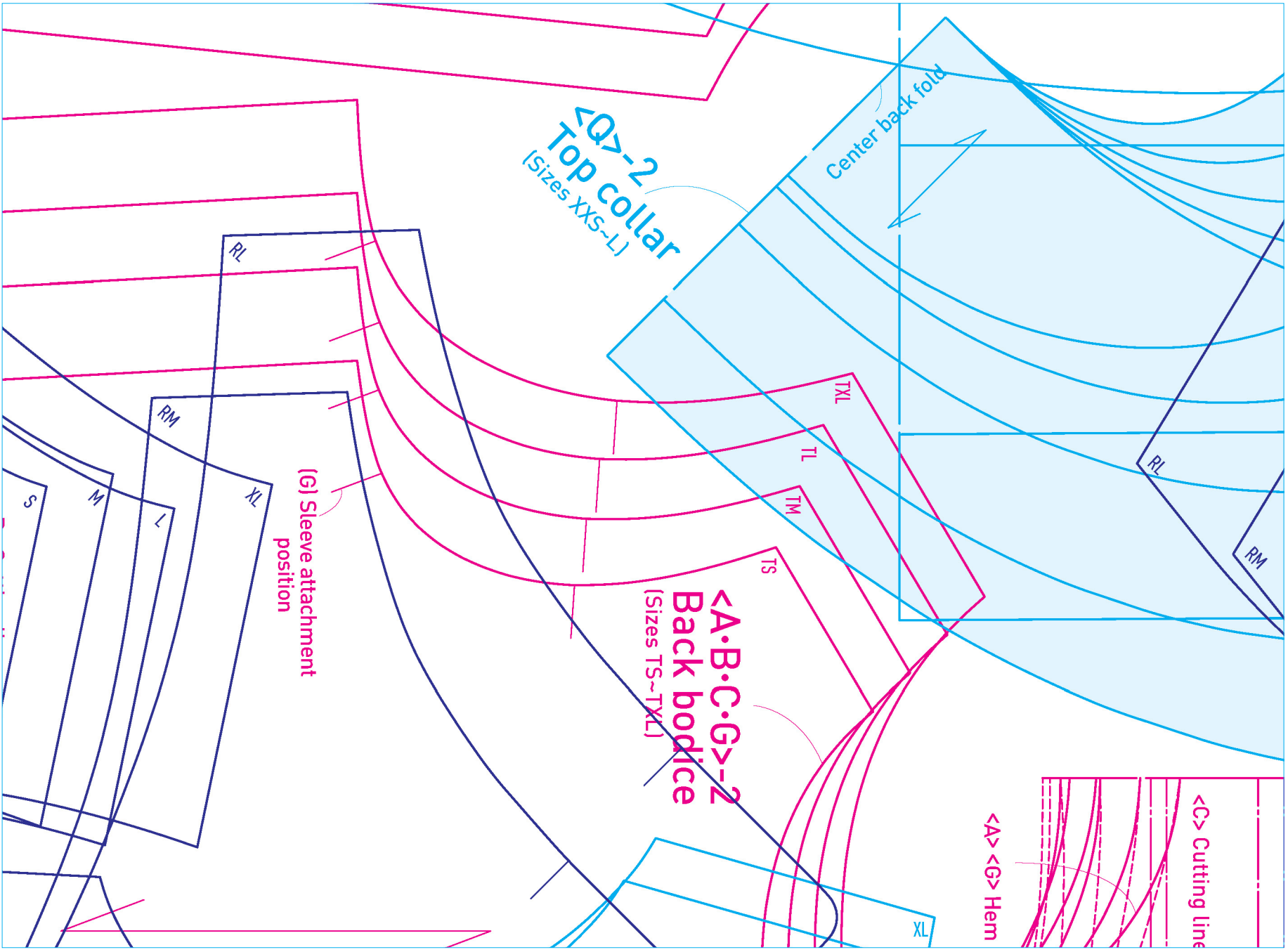
RL











<Q>-2
Top collar
(Sizes XS~L)

Center back fold

(G) Sleeve attachment position

<A·B·C·G>-2
Back bodice
(Sizes TS~TXL)

<A> <G> Hem

<C> Cutting line

S
M
L
XL

RL

RM

TXL

TL

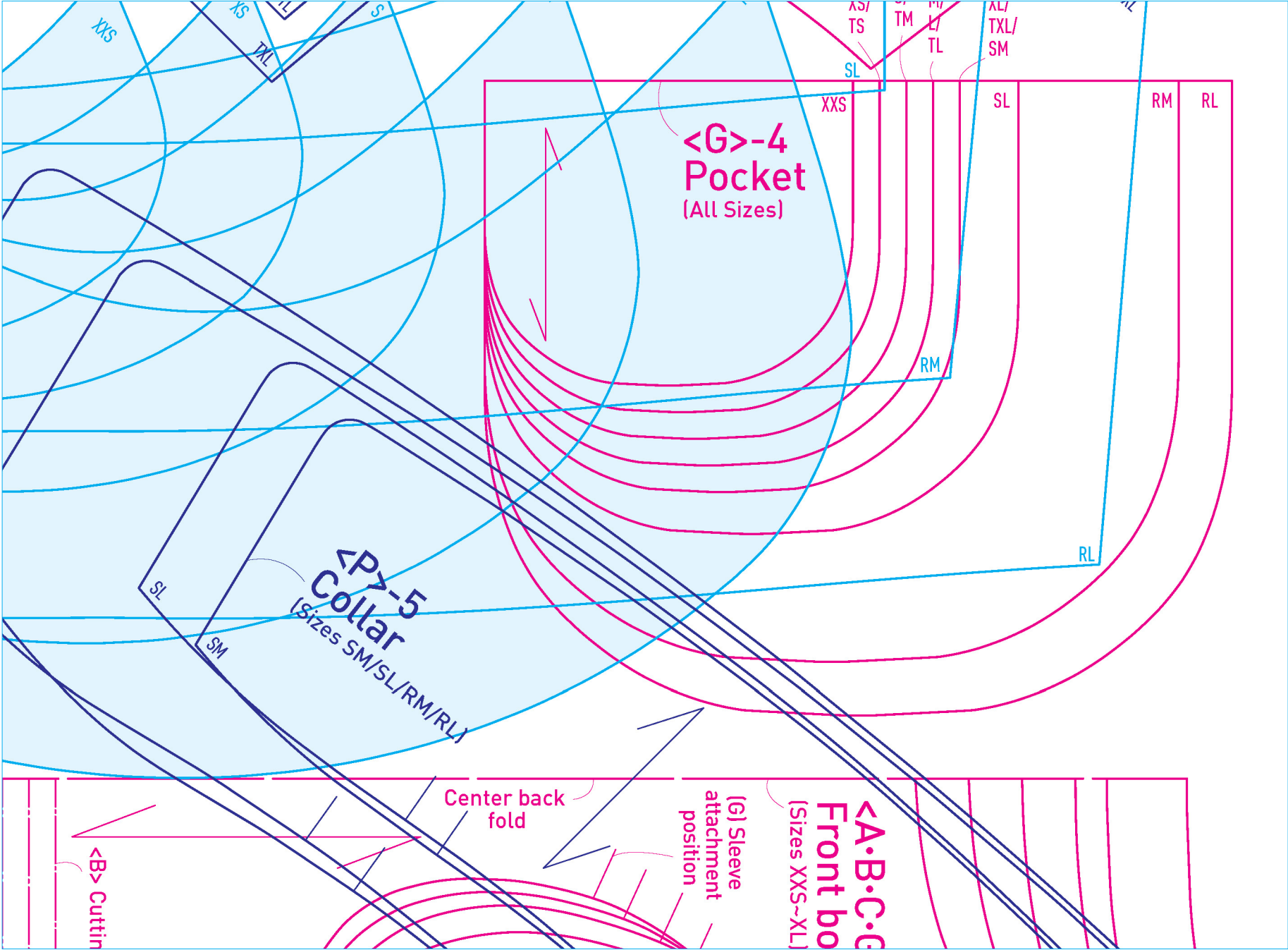
TM

TS

RL

RM

XL



**<G>-4
Pocket**
(All Sizes)

**<P>-5
Collar**
(Sizes SM/SL/RM/RL)

**<A.B.C.C>
Front bo**
(Sizes XXS~XL)

** Cuttin**

Center back
fold

(G) Sleeve
attachment
position

XXS
XS
S
M
L
TL
SM
RM
RL
XXS
SL
XXS
SL
RM
RL
XXS/TS
SM/TL
M/L/TL
XL/TXL/SM

